

TELETASK

trendsetter in domotics



AURUS-OLED

The domotic book.

AURUS-OLED, the TELETASK touch panel with white OLED display has a massive glass front plate with eight buttons which can control up to 32 functions. It will improve your interior design to the highest level.

The AURUS-OLED can be used to control all connected functions like there are lights (switching, dimming and multi-color), curtains, drapes, shutters, sun blinds, doors, gates, heating, cooling, audio, etc.... It is also possible to show messages and alarms on the display, such as: 'side door still open', 'please take medicine', 'heating system failed', 'somebody in the garden', etc...

This touch panel is especially designed to use where multiple Home Automation buttons are needed at one location on a wall, in a minimalist architecture.

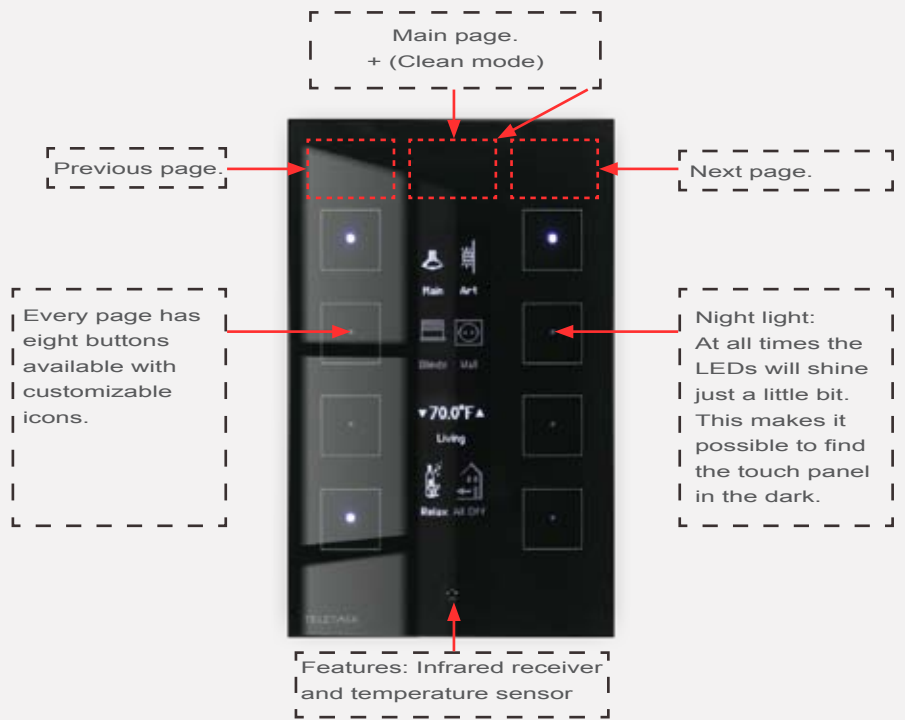
AURUS-OLED has basically eight buttons and is available in glossy WHITE, BLACK, ALU-GREY and GOLD finish. The colour layer exists of a ceramic print at the back of the front plate which resists to any environmental influence for decades. Love at first sight for you and your guests? This capacitive technology* panel is divided into eight

large sensitive area's with eight LED's and a graphical OLED display. At the top of the touch panel, close to the upper edge, there are three 'hidden' buttons to thumb (like in a book) through four pages of eight buttons each. This results in a total of 32 functions to control. You can have for example a 'main' page, a 'curtains'- page, a 'heating/cooling'-page and a 'music'-page. But there are no limits: Any button of any page can be configured to any function you like.

The icons on the display can be fully styled to your preferences. You can select from the large TELETASK library (lights, heating/cooling, curtains, sun blinds, A/V...) or you can design your own icons. When a button function is activated (ON) the icon is clearly visible (all white), when the function is OFF the icon remains visible but fades to soft-white.

During the night the eight feedback LED's are soft illuminated, for easy location of your buttons in the dark.

The 32 functions can be extended by using a TELETASK remote control. The mini remote control has 16 functions via the AURUS-OLED and the large remote control has extra functions for heating/



cooling, audio and RGB control on top. AURUS-OLED also has a built-in sensor for room temperature control. Both heating and cooling are supported.

... and a built-in buzzer will give you the acoustic feedback for every chosen function.

Mounting:

The AURUS-OLED touch panel fits in a single wall box, round or rectangular. Fixing is done with screws or claws and the unit can be mounted in both vertical and horizontal position. If you use message and/or alarms, for readability the panel needs to be mounted in a horizontal position (can be changed any time).

If you don't need eight buttons and a display, please check the other AURUS family members. You can easily exchange AURUS- family panels in the wall in a matter of seconds.

Technical:

Use as wall box TELETASK ref. TDS90000 (solid) and TDS90000PB (plaster board). But about any standard single wall box can be used in both brick- and plasterboard walls.

Dimensions: 90 x 140mm (glass plate) x 11mm (total thickness on the wall).

Connections: AUTOBUS: with dedicated connection set, IR-link: on the AUTOBUS connection (green wire), B&O compatible (optional).

Maintenance: use moist cloth when wiping the panel.

* What is capacitive touch technology?

TELETASK introduces the newest capacitive touch technology in his AURUS touch panel family. The buttons are made out of sensitive small antennas at the back of the glass plate. They sense the approach of a human finger, which then activates its predefined home automation function.

Orderreferences:

TDS12022WH	white
TDS12022BL	black
TDS12022AU	gold
TDS12022LG	aluminum grey
TDS12022WB	white + B&O**
TDS12022BB	black + B&O**
TDS12022AB	gold + B&O**
TDS12022LB	aluminum grey + B&O**

**xB-series have B&O IR-receiver in stead of standard IR-receiver.